

Integrated Training Pty Ltd

Student Handbook 2020



This Student Handbook
has been prepared for the students of:

Integrated Training Pty Ltd

A.B.N. 65 600 016 813

A.C.N. 600 016 813

Head Office Address: 15B Cabell Street Yokine WA 6060

Training Venue: 66 Canning HWY Victoria Park 6100

Training Venue: 11A Truganina Rd Malaga 6090

Training Venue: 88 King Road Bunbury 6230

Phone: 0451 906 978

Mobile: 0451 906 978

Email: hylton@integratedtraining.com.au

Web: www.integratedsecuritytraining.com.au

Message from the CEO

As CEO of this organisation, I can assure students that I will fully support the implementation of all quality, management and operational functions articulated in this student handbook. I will ensure myself and the Integrated Training team adhere to our underlying philosophy of continuous quality improvement in all aspects of Integrated Training's operations. We welcome your input to ensure that our services meet your expectations.

This student handbook provides the direction that informs and guides Integrated Training towards the provision of best practice in training development, management and service delivery. For Integrated Training, it will facilitate compliance with the standards regulated by the Australian Skills Quality Authority. For clients of Integrated Training, it will ensure that their investment in training provides the best possible training experience and outcomes.

Thank you for choosing Integrated Training to deliver your training needs. We trust that this Handbook will provide the information you need to proceed with your enrolment and successfully complete your training. Prior to enrolment in one of our courses, you will have an opportunity to discuss the information in this Handbook with one of our team who will confirm that you have had a chance to consider this information. If you have any questions prior to enrolment or at any time in the future please don't hesitate to contact myself or members of the team.

Integrated Training Contact Details

Chief Executive: Hylton Silver

Training Manager: Perry Bluemenau

Telephone Number: 0451 906 978

Head Office address: 15B Cabell Street Yokine WA 6060

Web Site: www.integratedsecuritytraining.com.au

Inquiry email address: hylton@integratedtraining.com.au

A.B.N. 65 600 016 813

A.C.N. 600 016 813

RTO Registration Number: 52720

OVERVIEW	6
Regulatory Framework	6
Overview of Integrated Training	6
The ‘Student’s Journey’	7
Integrated Training Organisational Structure	Error! Bookmark not defined.
Integrated Training Courses	9
Student Protection	11
Student services and Support	12
Client focus	12
Student Selection and Enrolment Procedure	13
Student support	15
Access and Equity	16
Language, Literacy and Numeracy Assistance	17
Code of Conduct	17
FEE INFORMATION	19
Fees and charges	19
Fee structure	20
Payment Receipts	24
Refunds	24
Training and Assessment	26
Principles of Training and Assessment	26
Assessment Policy	28
Connecting Training and Assessment with Industry	28
Apprenticeships and traineeships	29
RECOGNISING QUALIFICATIONS AND PRIOR LEARNING	30
Unique Student Identifier	30
Credit Transfer	31
Recognition of Prior Learning	31
Records	33
Complaints and Appeals	37
Complaints	37
Appeals	38
Complaints/Appeals Procedure	39
Legislative Requirements	41
Current Legislation	41
Integrated Training Legislation Implementation	42
Consumer Rights	45

OVERVIEW

Regulatory Framework

As a Registered Training Organisation Integrated Training is subject to the regulatory framework that governs the Australian Vocational Education and Training sector and protects both RTOS's and students. The legislative framework established by the [National Vocational Education and Training Regulator Act 2011](#) and related legislation, empowers the Australian Skills Quality Authority (ASQA) as the national regulator for Australia's vocational education and training sector. ASQA regulates courses and training providers according to the Standards for Registered Training Organisations 2015 to ensure nationally approved quality standards for training are met.

The VET Quality Framework is comprised of:

- [Standards for Registered Training Organisations 2015](#)
- [Australian Qualifications Framework](#)
- [Fit and Proper Person Requirements](#)
- [Financial Viability Risk Assessment Requirements](#)
- [Data provision requirements](#)

Overview of Integrated Training

Integrated Training recognises the importance and benefits of combining industry experience with tertiary education when striving to deliver programs of highest quality and relevance to the client. All trainers and assessors employed or contracted by Integrated Training have demonstrated significant industry experience in addition to obtaining tertiary qualifications, allowing them to provide a professional, well rounded learning environment for participants. Staff are equipped with the skills to ensure their teaching methods are suitable for all participants, utilising simple language where appropriate to communicate information most effectively. Integrated Training strictly adheres to the Standards for RTOs 2015 to continue delivering training services of the highest quality to their clients.

The CEO recognises that opportunities for improvement arise in every aspect of business and has developed an organisational culture within Integrated Training to capitalise on these opportunities for improved practice. Integrated Training supplies feedback forms to all students at the end of each program, as participant feedback has been identified as an important and valuable factor in monitoring and developing business practices and quality training, ensuring the ever-changing needs and expectations of clients are being met. The CEO also welcomes feedback from other improvement opportunities such as risk assessment, student suggestions, complaints and appeals, validation sessions and audit reports.

Student feedback is critical to our continuous improvement policy. Along with the formal feedback mentioned earlier, students are encouraged to give feedback throughout their enrolment.

In order to encourage and achieve continuous improvement based on the collection of the above-mentioned data, Integrated Training has developed a best practice register which will include a written record of all improvement strategies.

The 'Student's Journey'

Integrated Training CEO has identified the audit approach implemented by ASQA since June 2016. This represents a change to the traditional audit approach applied by regulators.

Key features include:

- Greater use of risk analysis and intelligence to trigger audits ('proactive regulation')
- Greater focus on the student's experience and RTO's practices and behaviours
- Options for longer, standard or earlier notice periods
- Scope of audit is flexible, based on intelligence and provider profile
- Information used to inform audit drawn from a wider range of sources including intelligence from other government agencies
- Greater student input
- Audit outcomes reported against the phases of the student's experience

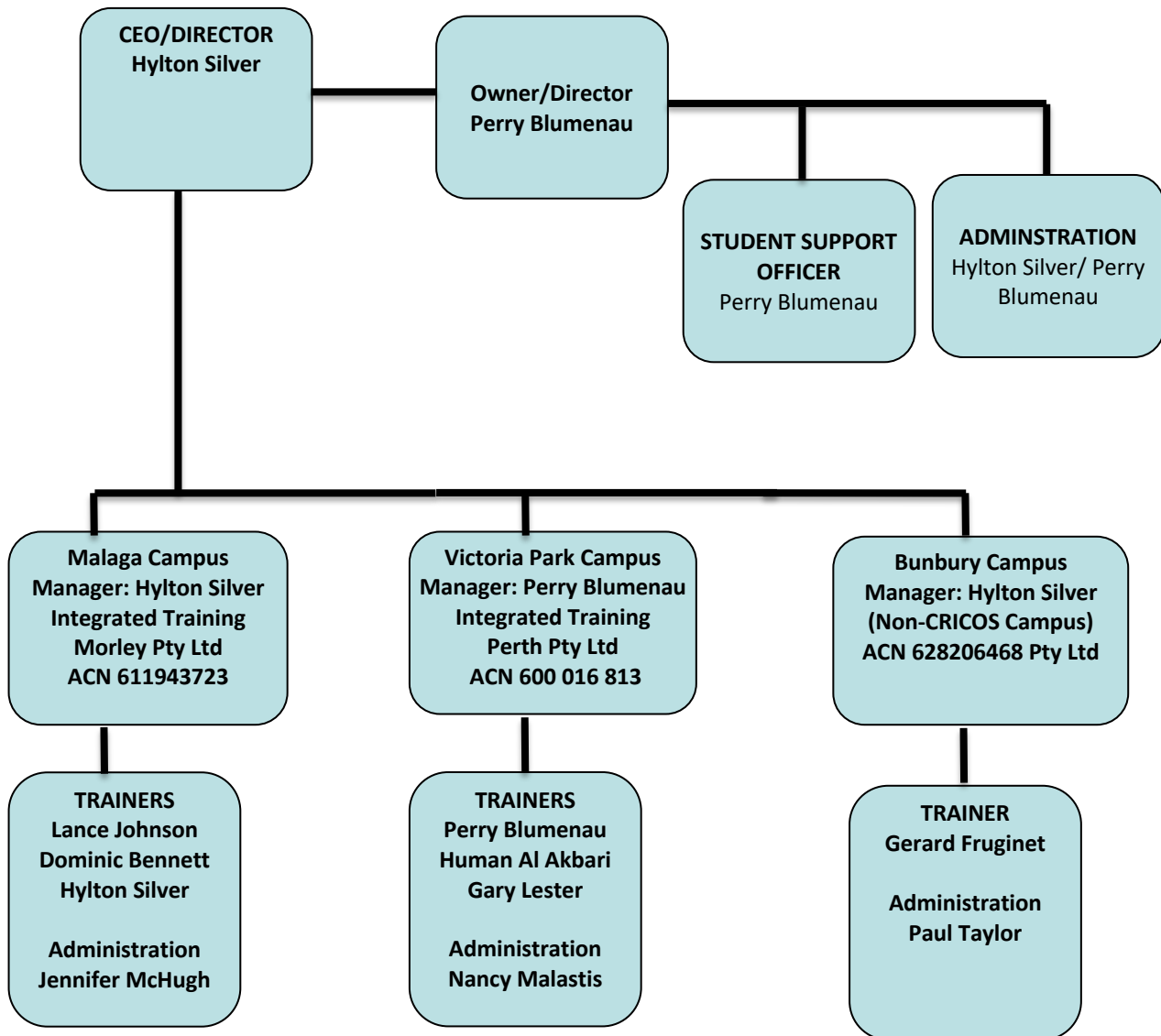
Key phases of the 'student experience' include:

- Marketing and recruitment
- Enrolment
- Support and progression
- Training and assessment
- Completion

Throughout Integrated Training's Student Handbook and Quality Management and Operational Framework each of the policies, systems and procedures support ASQA's audit model. Each staff member and in particular each trainer and assessor will ensure the student's experience will provide the best opportunity for a positive vocational outcome.

We sincerely hope your journey, as a student with Integrated Training will be most enjoyable.

Integrated Training Pty Ltd Organisation Chart
ACN 600 016 813



Integrated Training Courses

What courses can I study with Integrated Training?

All programs offered by Integrated Training are aligned to the CPP Property Services, HLT Health, CPC Construction Plumbing and Services SIT Tourism Travel and Hospitality training packages for quality assurance and best practice.

Currently Integrated Training is able to offer students accredited training in the following:

Qualifications:

- CPP20218 Certificate II in Security Operations
- CPP31318 Certificate III in Security Operations

Units of competency:

- CPPSEC3110 Control persons using batons
- CPPSEC3111 Restrain persons using handcuffs
- CPPSEC3126 Defend persons using spray
- CPPSEC3127 Conduct security screening using x-ray equipment
- CPPSEC3128 Conduct security screening using walk-through metal detection equipment
- CPPSEC3129 Conduct security screening using explosive trace detection equipment
- CPPSEC3130 Conduct security screening using hand-held metal detectors
- HLTAID001 Provide cardiopulmonary resuscitation
- HLTAID002 Provide basic emergency life support
- HLTAID003 Provide first aid
- HLTAID004 Provide and emergency first aid response in an education and care setting
- SITHFAB002 Provide responsible service of alcohol
- CPCCWHS1001 Prepare to work safely in the construction industry

What certification will I receive?

Upon successful completion of your course with Integrated Training you will be eligible to receive the following award.

Course	Certification
CPP20218 Certificate II in Security Operations	Qualification
CPP31318 Certificate III in Security Operations	Qualification
CPPSEC3110 Control persons using batons	Statement of Attainment
CPPSEC3111 Restrain persons using handcuffs	Statement of Attainment
CPPSEC3126 Defend persons using spray	Statement of Attainment
CPPSEC3127 Conduct security screening using x-ray equipment	Statement of Attainment
CPPSEC3128 Conduct security screening using walk-through metal detection equipment	Statement of Attainment
CPPSEC3129 Conduct security screening using explosive trace detection equipment	Statement of Attainment
CPPSEC3130 Conduct security screening using hand-held metal detectors	Statement of Attainment
HLTAID001 Provide cardiopulmonary resuscitation	Statement of Attainment
HLTAID002 Provide basic emergency life support	Statement of Attainment
HLTAID003 Provide first aid	Statement of Attainment
HLTAID004 Provide and emergency first aid response in an education and care setting	Statement of Attainment
SITHFAB002 Provide responsible service of alcohol	Statement of Attainment
CPCCWHS1001 Prepare to work safely in the construction industry	Statement of Attainment

After you have met the requirements of your course, you will be issued the relevant Diploma or Certificate with an academic transcript listing all of the units of competency you have achieved.

Nationally recognised qualifications are made up of individual units of competency. If you do not meet all of the course requirements but have completed the requirements for one or more units of competency, you will be issued an AQF Statement of Attainment for the unit(s) you have completed.

How is training delivered?

Training courses with Integrated Training are delivered by:

- Face to face classroom training
- Online seminars and discussion boards
- Blended learning

What are the prerequisites?

There are no pre-requisites for the units of competency listed on Integrated Training's current scope of registration.

Are there entry requirements?

Please refer to our website for course information and entry requirements.

How do I enrol?

Enrolment is initiated by you contacting Integrated Training. We will despatch to you by suitable means an enrolment form and literature on the course(s) being considered and any other relevant documentation.

All students will receive:

- A pre-course letter covering course information and requirements
- A pre-course evaluation checklist to identify student needs
- An induction

Further detail is provided in the section on Student Selection and Enrolment Procedure.

Our trainers

Integrated Training recognises the importance and benefits of combining industry experience with tertiary education when striving to deliver programs of highest quality and relevance to the client. All trainers and assessors employed or contracted by Integrated Training have demonstrated significant industry experience in addition to obtaining tertiary qualifications, allowing them to provide a professional, well rounded learning environment for participants. Staff are equipped with the skills to ensure their teaching methods are suitable for all participants, utilising simple language where appropriate to communicate information most effectively. Integrated Training strictly adheres to the Standards for RTOs 2015 to continue delivering training services of the highest quality to their clients.

Our approach

The CEO recognises that opportunities for improvement arise in every aspect of business and has developed an organisational culture within Integrated Training to capitalise on these opportunities for improved practice. Integrated Training supplies feedback forms to all students at the end of each program, as participant feedback has been identified as an important and valuable factor in monitoring and developing business practices and quality training, ensuring the ever-changing needs and expectations of clients are being met. The CEO also welcomes feedback from other improvement opportunities such as risk assessment, student suggestions, complaints and appeals, validation sessions and audit reports.

As a student with Integrated Training, your feedback is critical to our continuous improvement policy. Along with the formal feedback mentioned earlier, students are encouraged to give feedback throughout their enrolment.

In order to encourage and achieve continuous improvement based on the collection of the above-mentioned data, Integrated Training has developed a best practice register which will include a written record of all improvement strategies.

Student Protection

It is the intention of the CEO of Integrated Training that all students will receive the full training services paid for at all times, including but not limited to training and assessment, assessment only, recognition of prior learning or short courses. The continuous improvement and quality management practices employed by Integrated Training CEO and staff are designed to proactively identify any anomaly that might cause a business interruption or training failure and address this situation before any students are affected.

The corporate structure, governance and financial management systems and processes guarantee the training for students enrolled with Integrated Training. This guarantee in no way ensures a successful qualification outcome. Integrated Training will work with the affected students to ensure their rights are protected. This may include but is not limited to:

- A pro-rata refund of course fees
- Facilitating the transfer of the student's study to another suitable RTO

STUDENT SERVICES AND SUPPORT

Client focus

Integrated Training is committed to delivering high quality services that support students throughout their training and assessment. This commitment is based on a client focused operation that produces the best possible outcome for students. Integrated Training will ensure students are informed of the services they are to receive, their rights and obligations, and the responsibilities of the RTO. Students who undertake training with Integrated Training receive every opportunity to successfully complete their chosen training program. Integrated Training will provide students with information prior to commencement of services including any subcontracting arrangements affecting the delivery of training and/or assessment.

Integrated Training takes a systematic approach to establish and recognise the needs of each client. It is a requirement that all staff members do their utmost to meet the needs of students. Where a student's need is outside the scope or skill of the organisation they will be referred to an appropriate service or an alternate training organisation.

Student advice

Integrated Training delivers specialised training and assessment services¹. As such, it is vital that all students are informed of and understand the extent of the training course that they are enrolling in. Integrated Training has in place a process and mechanism to provide all clients information about the training, assessment and support services to be provided, and about their rights and obligations, prior to enrolment or entering into an agreement.

In summary, Integrated Training will provide:

- Training programs and services that promote inclusion and are free from discrimination
- Support services, training, assessment and training materials to meet the needs of a variety of individual students
- Consideration of each individual's needs to provide the best opportunity for skill development and attainment of qualifications that can lead to further training or employment
- Opportunity for consultation between staff and students so that all aspects of individual circumstances can be taken into consideration when planning training programs
- Consideration of the views of students' community, government agencies and organisations, and industry when planning training programs
- Access to information and course materials in a readily available, easily understood format
- Information to assist students in planning their pathway from school or the community to vocational education and training

¹ Services include:

- (a) Pre-enrolment materials;
- (b) Study support and study skills programs;
- (c) Language, Literacy and Numeracy (LLN) programs or referrals to these programs;
- (d) Equipment, resources and/or programs to increase access for students with disabilities;
- (e) Learning resource centres;
- (f) Mediation services or referrals to these services;
- (g) Flexible scheduling and delivery of training and assessment;
- (h) Counselling services or referrals to these services;
- (i) Information technology (IT) support;
- (j) Learning materials in alternative formats, for example, in large print; and
- (k) Learning and assessment programs customised to the workplace.

While Integrated Training guarantees that all students will receive the full training services paid for, it does not guarantee a student will successfully complete the course in which they are enrolled or that the student will obtain a particular employment outcome outside the control of Integrated Training.

Student information policy

Integrated Training will provide all relevant information and directions to each student prior to enrolment as part of the student induction to enable the student to make informed decisions about undertaking training with Integrated Training. This information will be clear and readily available in print or referral to an electronic copy. This will include details required to source the Integrated Training student handbook, available as PDF document on Integrated Training website: www.integratedtraining.com.au

Integrated Training will provide the following information specific to each student:

- the code, title and currency of the AQF qualification, skill set or VET course to which the student is to be enrolled, as published on the National Register the services the RTO will provide to the student including the:
 - estimated duration of the services
 - expected locations at which the services will be provided
 - expected modes of delivery
 - name and contact details of any subcontractor which will provide training and assessment to the student
- the student's obligations including any requirements that Integrated Training requires the student to meet to enter and successfully complete their chosen AQF qualification, skill set or VET course
- any materials and equipment that the student must provide; the educational and support services available to the student

Where there are any changes to agreed services, Integrated Training will advise the student in writing and with a follow-up telephone call as soon as practicable, including in relation to any new third-party arrangements or a change in ownership or changes to existing third party arrangements.

Student Selection and Enrolment Procedure

Student selection

Enrolment and admission into some Integrated Training programs is subject to meeting certain prerequisite conditions and/or entry requirements. Specific details of the prerequisites pertaining to these training programs are contained in individual course documentation and are made available prior to enrolment. In the case that a potential student does not meet the prerequisite conditions and/or entry requirements, Integrated Training staff will endeavour to assist them in understanding their options in regard to meeting the standards. Any questions regarding these arrangements can be addressed by trainers or Integrated Training management.

Enrolment

The enrolment procedure commences when a student contacts Integrated Training expressing interest in a training program(s). Integrated Training staff will respond by dispatching by suitable means an enrolment form, student handbook, literature on the program(s) being considered and any other documentation which may be relevant.

Enrolment applications will then be assessed to ensure that the student meets any prerequisites

and/or entry requirements that have been set for the selected course. Students will be informed of successful enrolment and sent information on the course and their course induction. Students who do not meet the prerequisites for the selected course will be notified of their unsuccessful enrolment and invited to contact Integrated Training to discuss their training needs and alternative opportunities.

Pre-course letter

As an additional support to enrolling students, Integrated Training will send a pre-course letter to the student prior to the commencement of training. Information includes the time, date and location of training, the resources the student should bring to the course and overview of the units of competency to be studied and the format/style of training to be provided.

Pre-enrolment Questionnaire

A pre-enrolment questionnaire is provided to each student. Questions are designed to identify the student's needs, so Integrated Training staff members can evaluate any requirements the student may have to improve his/her learning experience and outcome.

The designated Integrated Training staff member will receive and assess each student's pre-enrolment questionnaire. Based on the information in the checklist, the enrolment form, interview, induction and any other relevant correspondence and conversation, Integrated Training staff and management may offer additional support. Examples of the support services may include:

- Study support and study skills programs
- Language, literacy and numeracy (LL&N) programs or referrals to appropriate programs
- Equipment, resources and/or programs to increase access for students with disabilities
- Learning resource centres
- Mediation services or referral to appropriate services
- Flexible scheduling and delivery of training and assessment
- Counselling services or referral to appropriate services
- Information technology support
- Learning materials in alternative formats i.e. large print
- Learning and assessment programs customised to the workplace

Induction

On successful completion of the enrolment process, all students will undergo an induction program which will cover:

- Introduction to Integrated Training staff and resources available to assist your training
- Orientation to facilities and resources
- Confirmation of the units of competency in the course and qualification to be issued
- How training will be conducted and the method, format and purpose of assessment
- Learning and assessment resources to be provided
- Outline of traineeship/apprenticeship requirements, if you are undertaking the study as part of a traineeship/apprenticeship
- Overview of the support services offered by Integrated Training, especially for those students who might require additional language, literacy or numeracy support
- Explanation of the Appeals and Complaints procedures
- Career and AQF pathways available to students.

Student support

Integrated Training will assist all Students in their efforts to complete training programs by all methods available and reasonable. The Integrated Training Student Handbook advises Students that they can contact their trainer or the Training Manager if they are experiencing difficulties with any aspect of their studies. Staff will ensure students have access to the full resources of Integrated Training to assist them in achieving the required level of competency in all nationally recognised units of competency.

If a student is experiencing personal difficulties, the trainer and assessor will encourage the student to contact Integrated Training Training Manager, who will provide discreet, personalised and confidential assistance according to the nature of the difficulties. If issues are impacting the student's study, course deferral may be discussed.

In the event that a Student's needs exceed the capacity of the support services Integrated Training can offer, they will be referred to an appropriate external agency. These needs may be academic needs or personal needs. Extensive information regarding support agencies, resources and services may be sourced online. Integrated Training management will assist students to source appropriate support.

Examples of specialist support agencies Integrated Training has a relationship with and may engage:

Workplace Wellbeing	Hunterlink National 1800 554 654 https://hunterlink.org.au/
Reach Out	Reach Out helps supports people with issues such as drug taking, alcohol or gambling or gaming addiction http://au.reachout.com/tough-times/addiction
Counselling Online	Counselling Online is a free 24/7 drug and alcohol counselling service in Australia that supports people affected by alcohol and other drugs. For phone contacts in all Australian States refer to: http://eheadspace.org.au/
Head Space	eheadspace is an online and telephone service which supports young people and their families going through a tough time. It is specifically targeted at those aged between 12 and 25. Phone: 1800 650 890 (available from 9am – 1am 7 days a week) http://www.eheadspace.org.au/
Counselling services	Referral to appropriate 24/7 services such as: Beyond Blue ph: 1300224636 http://www.beyondblue.org.au Lifeline ph: 131114 http://www.lifeline.org.au
Reading and Writing Hotline	www.readingwritinghotline.edu.au/information-and-advice Phone: 1300 655 506. There are also numerous adult reading/writing apps for smart phones/tablets aimed at supporting literacy.
LLN Training Courses provided by local TAFE Colleges	These institutes have specialist LLN Teachers to support individual participants own level of development and can be accessed via a Google Search of local TAFEs and course availability.

Flexible delivery and assessment procedures

Integrated Training recognises that some people are better suited to learning via teaching methods not usually obtained in the traditional classroom setting. With some minor adjustments to teaching and assessment methods, a student who is experiencing difficulty learning and achieving the desired results in the traditional setting may show considerable improvements.

The staff and management of Integrated Training respect these differences among students and will endeavour to make any necessary adjustments to their methods in order to meet the needs of a variety of students. For example, the inability to complete a written assessment will not be interpreted as a sign of incompetence, provided the student can verbally demonstrate competency.

Acceptable adjustments to teaching and assessment methods may include but are not limited to; having a trainer read assessment materials to students, having a student's spoken responses to assessment questions recorded or allowing a student to sit for an assessment alone in a different room.

Integrated Training staff will pursue any reasonable means within their ability to assist students in achieving the required competency standards. In the event that a student's needs exceed the capacity of the support services Integrated Training can offer, they will be referred to an appropriate external agency.

Reasonable adjustment

Reasonable adjustment means adjustments that can be made to the way in which evidence of student performance can be collected. Whilst reasonable adjustments can be made in terms of the way in which evidence of performance is gathered, the evidence criteria for making competent/not yet competent decisions (and/or awarding grades) should not be altered in any way. That is, the standards expected should be the same irrespective of the group and/or individual being assessed; otherwise comparability of standards will be compromised.

Access and Equity

Integrated Training is committed to practicing fairness and providing an equal opportunity for all current and potential students to access and participate in learning, and to achieve their learning outcomes regardless of age, gender, cultural or ethnic background, disability, sexuality, language skills, literacy or numeracy level, unemployment, imprisonment or remote location that may present a barrier to access, or any other perceived difference in class or category. Integrated Training ensures that its practices are as inclusive as possible and do not unreasonably prevent any clients from accessing its services. Integrated Training will address access and equity matters as a nominated part of operational duties.

If a student identifies with one or more of the following priority groups, he/she may be able to receive additional assistance:

- Aboriginal and/or Torres Strait Islander people
- Carers of people who are ill, aged or who have a disability
- People with a disability
- Women and girls who are returning to education and training
- Women and girls who are seeking training opportunities in non-traditional roles
- Young people aged 15 to 25
- Australian South Sea Islanders
- Parental job seekers
- People with English language, literacy and numeracy needs

- Mature aged workers who require up skilling
- Long term unemployed and disadvantaged jobseekers
- People from different cultural and ethnic backgrounds
- People who speak a language other than English

Integrated Training has developed this quality management and operational framework to guide and inform all staff and students in their obligations regarding access and equity. Upon induction into Integrated Training, all staff is provided with copies of the policies which they must adhere to throughout all their operations as an Integrated Training staff member. Students are made aware of the access and equity policy via the Integrated Training student handbook and informed of their rights to receive access and equity support and to request further information.

Integrated Training access and equity policies are in place to ensure that training opportunities are offered to all people on an equal and fair basis in all circumstances, irrespective of their gender, culture, linguistic background, race, socio-economic background, disability, age, marital status, pregnancy, sexual orientation or carer's responsibilities.

Practicing these policies will guarantee that any student who meets Integrated Training entry requirements will be accepted into any training programs. If any student or staff member have issues or questions regarding access and equity, or believes they have been treated unfairly, they will be directed to Integrated Training's management for consultation.

Language, Literacy and Numeracy Assistance

Integrated Training course information and learning materials contain written documentation and in some cases, numerical calculations.

Integrated Training recognises that not all students will have the same level of ability in relation to reading, writing and performing calculations. When an issue is identified by Integrated Training staff or requested by a student, a language, literacy and numeracy test will be provided to assess the student's ability. This process is to ensure that all students who commence a training program possess the skills required to understand the presented material and complete assessments.

Integrated Training will endeavour to provide assistance to students having difficulty with language, literacy or numeracy to accommodate their needs. In the event that a student's needs exceed the ability of Integrated Training staff to assist, the student will be referred to an external support agency so they have the opportunity to obtain the skills required to complete the training program.

Code of Conduct

Integrated Training makes every effort to practice cooperation and mutual respect in all internal and external dealings to uphold high quality, professional training and assessment services. The same disciplined behaviour is expected of students as a contribution to a functional learning environment, and as a sign of respect to staff and fellow students.

Professional Behaviour

Integrated Training Management advises any trainer or staff member who is dissatisfied with the behaviour or performance of a student that they have the authority to:

- Warn the student that their behaviour is unsuitable, or
- Ask a student to leave the class, without refund or acceptance into another course, or
- Immediately cancel the class.

If a student wishes to object or lodge an appeal against the disciplinary action taken, they have the right and opportunity to follow the Integrated Training complaint procedure.

Integrated Training staff are expected to maintain a professional and ethical working relationship with all other staff members, management and students. Breaches of the disciplinary standards will result in discussion between the relevant trainer and Integrated Training, and appropriate action will be taken.

Plagiarism

Definition²

Plagiarism is the "wrongful appropriation" and "purloining and publication" of another author's "language, thoughts, ideas or expressions," and the representation of them as one's own original work.

Policy

Plagiarism is considered academic dishonesty and a breach of journalistic ethics. It is subject to serious sanctions such as expulsion. It is quite reasonable to research material in the course of undertaking assessment. All sources, however, must be clearly referenced. Integrated Training 's CEO takes a very strict approach to plagiarism and proven incidents will not be tolerated.

² From www.wikipedia.org

FEE INFORMATION

Fees and charges

Integrated Training operates predominately as a 'fee for service' training business. This means all training programs attract fees. All fees will be paid in accordance with the fee structure unless prior arrangements are made with Integrated Training management.

Fee information is available via:

- Integrated Training website
- Integrated Training program brochures
- Integrated Training promotional material
- Direct email from Integrated Training

Each of these information streams clearly identifies all fees and charges, including optional charges such as Recognition of Prior Learning (RPL) fees, and will be updated regularly so that both Integrated Training and our clients will be protected.

Integrated Training will provide the following fee information, to each student:

- a) The total amount of all fees including course fees, administration fees, materials fees and any other charges;
- b) Payment terms, including the timing and amount of fees to be paid and any non-refundable deposit/administration fee;
- c) The nature of the Student Protection offered by the RTO to complete the training and/or assessment once the student has commenced study in their chosen qualification or course;
- d) The fees and charges for additional services, including such items as issuance of a replacement qualification testamur and the options available to students who are deemed not yet competent on completion of training and assessment; and
- e) The RTO's refund policy.

Fee structure

Fee for Service Students - Qualifications

Each qualification offered by Integrated Training has a specific course fee. The course fee is the maximum fee that may be charged to the student for their selected training program.

Our policy of a staged, progressive payment schedule is intended to provide fair and equitable training and assessment service. The student will pay for training and assessment services as they are provided.

It is Integrated Training's policy that the course fee will be *all-inclusive*. Students will not be 'surprised' by unexpected requirements, fees or expenses.

Where additional resources normally associated with a program of study are required (for example; reference material, research documents, own computer) students would be clearly advised of exactly what is required in the student study guide for that program.

Payment Schedule - Qualifications

Integrated Training's policy is to make taking part in quality training and assessment accessible and affordable. Integrated Training has developed a payment schedule that will not ask for more than \$1500 at any time prior to the service being delivered.

Course	Fee
CPP21218 Certificate II in Security Operations	\$899

Duration	15 Days
-----------------	---------

Payment required in advance

A deposit of 50% of the total course fee is required from each student. This payment secures the student's place on the course.

Payment balance

The remaining 50% is to be paid at commencement of training.

Recognition of Prior Learning (RPL)	Fee \$400
--	---------------------

Integrated Training has developed a payment schedule for RPL that will not ask for more than \$1500 at any time prior to the service being delivered.

RPL enrolment and application completed	\$100
RPL applicant collates, prepares and submits their RPL evidence	\$100
Integrated Training assessor assesses the evidence and provides feedback	\$100
RPL assessment completed and (where applicable) certification issues	\$100

Duration	1 week
-----------------	--------

Course	Fee
CPP31318 Certificate III in Security Operations	\$1,199

Duration 6 months

Payment in advance

Students will be asked to pay \$250 in advance. This payment confirms their enrolment in the course.

Payment balance

Integrated Training has developed a payment schedule that extends across the duration of the training program. A total of six (6) payments will be scheduled across the duration of the training program.

Where the training program is six (6) months duration, a payment will be made each four (4) weeks.

The amount of each payment will equally divide the course fee.

For example: \$1,199 - \$250 = \$949 Then \$949 divided into 6 payments = \$158.20

Recognition of Prior Learning (RPL)	Fee
	\$600

Integrated Training has developed a payment schedule for RPL that will not ask for more than \$1500 at any time prior to the service being delivered.

RPL enrolment and application completed	\$150
RPL applicant collates, prepares and submits their RPL evidence	\$150
Integrated Training assessor assesses the evidence and provides feedback	\$150
RPL assessment completed and (where applicable) certification issues	\$150

Duration 1 week

To ensure fluid and seamless administration, Integrated Training will discuss a payment method with the student. They may choose:

- Scheduled direct debit
- Schedule credit card payment
- bPay transfer
- Or similar

After paying \$250 in advance to secure their place, students will be asked to make a payment on the first scheduled face to face training day.

At this point the students will have:

- Taken part in the pre-enrolment questionnaire
- Completed the enrolment form
- Provided their USI
- Received their pre-course letter.

The students will be provided with:

- The first training day of the course, induction etc
- The course text books

- Student study schedule
- The first set of assessments and
- Other relevant support materials.

The payment schedule used by Integrated Training ensures students receive the training and assessment services they have paid for.

Corporate Clients - Qualifications

Payment

Integrated Training operates with a number of corporate clients including:

- Wilsons
- ISS Security
- MSS Security

This means the employer or agency will manage the payment in negotiation with Integrated Training.

This means the employer or agency will manage the payment in negotiation with Integrated Training.

The payment schedule for corporate clients will observe the payment schedule described above and be invoiced in arrears.

Fee for Service Students – Short Courses

Each qualification offered by Integrated Training has a specific course fee. The course fee is the maximum fee that may be charged to the student for their selected training program.

It is Integrated Training's policy that the course fee will be *all-inclusive*. Students will not be 'surprised' by unexpected requirements, fees or expenses.

Payment Schedule – Short Courses

Payment required in advance

A deposit of 50% of the total course fee is required from each student.

Payment balance

The remaining 50% is to be paid at commencement of training.

Program fees are:

- | | |
|---|-------|
| • CPPSEC3110 Control persons using batons | \$250 |
| • CPPSEC3111 Restrain persons using handcuffs | \$250 |
| • CPPSEC3126 Defend persons using spray | \$250 |
| • HLTAID001 Provide cardiopulmonary resuscitation | \$99 |
| • HLTAID002 Provide basic emergency life support | \$120 |
| • HLTAID003 Provide first aid | \$120 |
| • HLTAID004 Provide and emergency first aid response in an education and care setting | \$120 |
| • SITHFAB002 Provide responsible service of alcohol | \$99 |
| • CPCWHS1001 Prepare to work safely in the construction industry | \$99 |

Aviation Screening Course

Integrated Training has grouped units of competency together to create an industry specific course to support students seeking employment in an environment that requires screening of people and/or items

- CPPSEC3127 Conduct security screening using x-ray equipment
- CPPSEC3128 Conduct security screening using walk-through metal detection equipment
- CPPSEC3129 Conduct security screening using explosive trace detection equipment
- CPPSEC3130 Conduct security screening using hand-held metal detectors

Course Fee

\$750

Corporate Clients – Short Courses

Program fees

Per negotiation with the employer and Integrated Training the course fee will be paid.

Payment balance

Invoiced in arrears to the employer at completion of the training program.

Other Fees - Fee for Service and Corporate Clients

Enrolment fee

No enrolment fee is applicable.

Withdrawal fee

No withdrawal fee is applicable.

Re-submit fee

No re-submit fee applies.

Re-assessment fee

No re-assessment fee applies.

Produce partial completion statement of attainment

No fee applies to produce a statement of attainment when the student has partially completed the training program and must withdraw.

Re-print certification

Where the student requests a new copy of his/her certification, the following fees apply:

- Statement of attainment \$25.00+GST
- Qualification (with academic transcript) \$40.00+GST

Contact Us

Address: 15B Cabell Street Yokine WA 6060

Phone: 0451 906 978

Email: hylton@integratedtraining.com.au

Methods of payment

Students may make payments to Integrated Training by any of the following means:

- Cash
- Cheque/Money Order

- EFTPOS
- Credit Card (MasterCard and VISA only)
- Direct Deposit
- BPay and Australia Post BillPay (selected locations only)
- PayPal (selected locations only)

GST

All Nationally Recognised Qualifications, Accredited Courses and Units of Competency delivered by Integrated Training are GST-Free in accordance with the Australian Taxation Office GST Rulings GSTR 2000/27, GSTR 2001/1 and GSTR 2003/1.

Payment Receipts

A tax invoice/receipt will be issued for all payments.

Refunds

Integrated Training will protect fees paid in advance and has a fair and reasonable refund policy.

Information provided prior to enrolment or the commencement of training and assessment, whichever comes first, specifies the student's rights as a consumer, including but not limited to any statutory cooling-off period (where applicable) and the student's right to obtain a refund for services not provided by the Integrated Training in the event the:

- Arrangement is terminated early, or
- Integrated Training fails to provide the agreed services.

Refund – Prior to Commencing Training – Qualifications and Short Courses

An application for a refund is addressed according to the amount of notice given by the person making the request:

- 14 days prior to the commencement of the course – 100% refund
- Between 13 days and 7 days prior to the course - 75% refund
- Between 6 days and the commencement of the course – 50% refund
- Withdrawal during the course – no refund. A pro-rata credit is available so the student can complete the course at a later date

Refund – After Training has commenced - Qualifications

A student may ask for a refund of the most recent scheduled payment. Integrated Training will refund 100% of the most recent scheduled payment.

For example:

A student has made their scheduled payments up to and including Payment 5. And taken part in the training and assessment delivered at that point in the course.

After completing the face to face training day that coincides with Payment 5, the student approaches a Integrated Training representative and asks for a refund.

The refund will be 100% of the most recent scheduled payment made.

A 100% refund will be made to the student within 48 hours.

Integrated Training will encourage the student to return to the training program in the future.

Refund – Short Courses

An application for a refund is addressed according to the amount of notice given by the person making the request:

- 14 days prior to the commencement of the course – 100% refund
- Between 13 days and 7 days prior to the course - 75% refund
- Between 6 days and the commencement of the course – 50% refund

No refund will be made once the student has commenced the training program. The student may discuss the option to return to the same course at a future date with Integrated Training.

Corporate Clients

Any refund of course fees will be negotiated between Integrated Training and the employer or agency. A fair and equitable refund policy will apply.

Protecting fees

Integrated Training will ensure that student's prepaid fees (including enrolment fees, tuition fees, materials fees and any other fee component that is a mandatory payment for the course) are protected in an appropriate manner.

Student's training is further protected by Integrated Training's financial management policy and procedure. Any fees taken prior to the commencement of training are deposited into the No 2 (deposit) account. Fees paid in advance are not transferred to the operating account until training commences.

Integrated Training will not collect more than \$1500 in advance and will take progressive payments that are proportionate to the training services provided. The payment schedules outlined above support this policy.

Third Party Training

Where applicable, Integrated Training's Student Protection extends to training partners and training conducted by a third party on behalf of the RTO.

TRAINING AND ASSESSMENT

Integrated Training is committed to delivering high quality training and assessment services that exceed the expectations of their students. To ensure this, Integrated Training has implemented processes for data collection and analysis within its operations that ensure the continuous improvement of training and assessment. In order to provide high quality outcomes to their clients and students, Integrated Training ensures that strategies for training and assessment are developed with effective consultation with industry and stakeholders.

Principles of Training and Assessment

Training and assessment strategies developed by Integrated Training will adhere to the following principles:

- Training and assessment strategies are developed for each qualification/unit of competency that will be delivered and assessed
- All training programs will require the development of a training and assessment strategy for full and partial completion of a qualification
- Each training and assessment strategy will be developed in consultation with industry representatives, trainers, assessors and key stakeholders
- Training and assessment strategies will reflect the requirements of the relevant training package and will identify target groups
- Training and assessment strategies will be validated annually through the internal review procedures

Integrated Training will apply the *Principles of Assessment and the Rules of Evidence*.

Principles of assessment

To ensure quality outcomes, assessment should be:

- Fair
- Flexible
- Valid
- Reliable

Fair

Fairness in assessment requires consideration of the individual student's needs and characteristics, and any reasonable adjustments that need to be applied to take account of them. It requires clear communication between the assessor and the student to ensure that the student is fully informed about, understands and is able to participate in the assessment process, and agrees that the process is appropriate. It also includes an opportunity for the person being assessed to challenge the result of the assessment and to be re-assessed if necessary.

Flexible

To be flexible, assessment should reflect the student's needs; provide for recognition of competencies no matter how, where or when they have been acquired; draw on a range of methods appropriate to the context, competency and the student; and support continuous competency development.

Valid

Assessment is valid when the process is sound and assesses what it claims to assess. Validity requires that:

- Assessment against the units of competency must cover the broad range of skills

- Knowledge that are essential to competent performance
- Assessment of knowledge and skills must be integrated with their practical application
- Judgement of competence must be based on sufficient evidence (that is, evidence gathered on a number of occasions and in a range of contexts using different assessment methods). The specific evidence requirements of each unit of competency provide advice on sufficiency

Reliable

Reliability refers to the degree to which evidence presented for assessment is consistently interpreted and results are consistent with assessment outcomes. Reliability requires the assessor to have the essential competencies in assessment and relevant vocational competencies (or to assess in conjunction with someone who has the vocational competencies). It can only be achieved when assessors share a common interpretation of the assessment requirements of the unit(s) being assessed.

Rules of Evidence

These are closely related to the principles of assessment and provide guidance on the collection of evidence to ensure that it is:

- Valid
- Sufficient
- Authentic
- Current

Valid

Assessment is valid when the process is sound and assesses what it claims to assess. Validity requires that:

- Assessment against the units of competency must cover the broad range of skills
- Knowledge that are essential to competent performance
- Assessment of knowledge and skills must be integrated with their practical application
- Judgement of competence must be based on sufficient evidence (that is, evidence gathered on a number of occasions and in a range of contexts using different assessment methods). The specific evidence requirements of each unit of competency provide advice on sufficiency

Sufficient

Sufficiency relates to the quality and quantity of evidence assessed. It requires collection of enough appropriate evidence to ensure that all aspects of competency have been satisfied and that competency can be demonstrated repeatedly. Supplementary sources of evidence may be necessary. The specific evidence requirements of each unit of competency provide advice on sufficiency.

Authentic

To accept evidence as authentic, an assessor must be assured that the evidence presented for assessment is the student's own work.

Current

In assessment, currency relates to the age of the evidence presented by a student to demonstrate that they are still competent. Competency requires demonstration of current performance, so the evidence collected must be from either the present or the very recent past.

Assessment Policy

Integrated Training acknowledges the critical role that assessment plays in determining the competency of students. In developing the assessment (including RPL) for each qualification and unit of competence, the CEO will ensure:

- Compliance with the assessment guidelines from the relevant training package, qualification and unit of competence of accredited course
- Assessment leads to a qualification or statement of attainment under the Australian Qualifications Framework (AQF)
- Assessment complies with the principles of competency based assessment and informs the student of the purpose and context of the assessment
- The rules of evidence guide the collection of evidence to support the principles of validity and reliability
- The application of knowledge and skills is relevant to the standard expected in the workplace, including skills for managing work tasks, contingencies and the job environment
- Timely and appropriate feedback is given to students
- Assessment complies with Integrated Training's access and equity policy
- All students have access to re-assessment on appeal

Integrated Training implements an assessment system that ensures that assessment (including Recognition of Prior Learning) complies with the assessment requirements of the relevant training package or VET accredited course. Integrated Training recognises that each unit of competency contains assessment requirements relating to; performance evidence, knowledge evidence and assessment conditions.

Connecting Training and Assessment with Industry

Industry Engagement

“Training and assessment practices are relevant to the needs of industry and informed by industry engagement.”

All aspects of Integrated Training training and assessment are informed by meaningful industry engagement. To maximise the outcomes for students, Integrated Training ensures that every opportunity to connect training and assessment with the workplace is utilised. Opportunities will be developed in consultation with the relevant industry personnel and responsibilities clearly communicated to all involved.

To identify a range of delivery and assessment methods that meet a variety of needs, an ongoing schedule of industry liaison and consultation will be adhered to. These consultations will be documented with meetings and memorandums acknowledged by those industry and enterprise representatives involved in consultation relating to the development and ongoing review of assessment strategies.

Integrated Training will:

- Involve industry personnel in planning training programs, where they are relevant to the training and assessment program
- Ensure that the training and assessment program makes full use of opportunities presented by industry
- Consult with industry personnel in the development of workplace training and assessment processes
- Monitor the student's progress

Information from industry stakeholders is used to continuously improve training and assessment. A number of programs that engage employers or other stakeholders who contribute to each student's training, assessment and support services to meet their individual needs are available. In addition, Integrated Training utilises industry engagement to inform the currency of trainers and assessors industry skills.

Apprenticeships and traineeships

At this time Integrated Training will not seek to engage apprentices or trainees. apply for government funding or enter into government incentive schemes. Integrated Training CEO may take the decision to change this policy in the future.

RECOGNISING QUALIFICATIONS and PRIOR LEARNING

Unique Student Identifier

The [Unique Student Identifier \(USI\)](#) scheme allows students to access a single online record of their VET achievements. The online system provides each student with a USI and allows for reliable confirmation of these achievements by employers and other RTOs. The USI scheme will provide a national online authenticated record of student's training attainment and will serve as a building block for a range of vocational education and training reforms. Over time, the ability of students to access and share their training records will make enrolment processes more efficient for training providers and students.

Integrated Training will only issue a qualification or statement of attainment to a student after the student has provided a verified USI or Integrated Training applies for a USI on behalf of the student. To avoid any delays in issuing certification documentation Integrated Training will ensure that student's USIs are applied for or verified USI at the time of enrolment. Integrated Training will protect the security of all information related to USIs.

Security measures are in place to protect both digital and hard-copy records from loss, damage or unauthorised access. Integrated Training stores paper-based records in locked cabinets. Digital records are backed up on a Cloud system. All AQF certification documentation issued by Integrated Training is kept for 30 years.

When reporting data about the training, each record of nationally recognised training that is provided to the national centre for vocational education research (NCVER) national VET provider collection will have a USI attached. This USI will be used to draw down on this data collection in real time. This means that, in the future, students will be able to draw down a record of their VET achievements from one place. They can view this online or they can use the data to develop a transcript that they can attach to a job application, for example.

The USI will be increasingly useful for Integrated Training when the data builds, Integrated Training (with the student's permission) will be able to draw down information about that student's previous VET attainments throughout Australia. This will assist with assessing student's admission to courses and in some circumstances, their eligibility for funding. Training providers will have access to an online information source to manage student transfers between training providers, and the assessment of credit transfer and pre-requisites.

More information is available from the [Department of Industry's website](#) where a comprehensive [video](#) outlines the USI scheme for Integrated Training staff.

Recognising Qualifications from another RTO

Integrated Training will recognise all AQF qualifications and statements of attainment issued by any other RTO. If any ambiguity is detected when validating a student's certification, Integrated Training will seek verification from the relevant RTO before recognising the qualification or statement of attainment.

Students enrolling with Integrated Training will be made aware of the recognition of qualifications policy by Integrated Training staff at the time of enrolment to offer the opportunity of recognition of relevant qualifications or statements of attainment prior to the commencement of training. Integrated Training trainers will remind students of the policy progressively throughout the duration of their course.

When a student presents an AQF qualification or statement of attainment to a trainer or staff member, a copy of the certificates will be taken and submitted to Integrated Training for verification. Integrated Training will verify the authenticity of the qualification or statement of attainment.

The verified copy of the qualification or statement of attainment is placed in the student's file. Once verification of the qualification or statement of attainment has been established, Integrated Training staff will inform the student and offer exemption from the relevant unit(s) of competency. Staff will ensure the student is aware of and understands what component(s) of their training and assessment are affected. Integrated Training staff will update the student's records accordingly.

Credit Transfer

Credit transfer refers to the transferral of academic credit obtained by students through participation in courses or national training package qualifications with other RTOs, towards a qualification offered by Integrated Training. Credit transfer is granted on the basis that the credit validates the student's competency within the relevant qualification/unit of competence. Credit transfer of a qualification/unit of competence is available to all students enrolling in any training program offered by Integrated Training.

Recognition of Prior Learning

Integrated Training appreciates the value of workplace and industry experience, and recognises that students will acquire vocational skills and knowledge from a variety of sources other than formal training. These skills are legitimate irrespective of how they were acquired and the RPL process is designed to provide validation of such relevant skills.

Recognition of Prior Learning (RPL) is an assessment process that assesses an individual's formal, non-formal and informal learning to determine the extent to which that individual has achieved the required learning outcomes, competency outcomes, or standards for entry to, and/or partial or total completion of a VET qualification.

In order to grant RPL, the assessor must be confident that the student is currently competent against the endorsed industry or enterprise competency standards or outcomes specified in Australian Qualifications Framework accredited courses. The evidence may take a variety of forms and could include certification, references from past employers, testimonials from clients and work samples. The assessor must ensure that the evidence is authentic, valid, reliable, current and sufficient.

Integrated Training's recognition of prior learning process

The recognition of prior learning (RPL) process will be offered to and explained to all students.

Students who believe they have already obtained current skills and knowledge that would otherwise be covered in the qualification/unit of competence for which they intend to study, should apply for RPL at the time of enrolment. The student's skills and knowledge will be assessed and validated, and where appropriate, units of competency acknowledged, and face-to-face training reduced.

As part of the Integrated Training enrolment policy, trainers will advise students of the availability of RPL, explain what the process involves and how it relates to the attainment of the qualification in some circumstances. When relevant, trainers will remind students of this option progressively throughout their time in training, in order to provide multiple opportunities for students to engage in the RPL process.

RPL fee

The student will be charged 50% of the scheduled course fee. This includes the initial application, consultation either in person or via phone with a suitably qualified assessor, the RPL assessment and (if successful) certification.

Where the student is not able to achieve the full qualification through RPL and gap training is required, a training plan and costing structure will be mutually agreed upon. The basis of the cost structure will be pro-rata on a unit by unit basis based on the scheduled course fee.

RPL System

Integrated Training utilises the online Recognition of Prior Learning assessment platform: [RPL Assess](#). An RPL applicant will be provided with access to the platform and given clear instructions on how to upload their evidence. The RPL Assess [Explainer Video](#) will provide more detail.

RECORDS

Integrated Training has a clearly documented quality administrative and records management system in place to secure the accuracy, integrity and currency of records, to keep documentation up-to-date and to secure any confidential information obtained by Integrated Training and committees, individuals or organisations acting on its behalf.

Data is collected and stored in accordance with the processes outlined in this document and Integrated Training's record management procedures ensure timely and accurate records inform the continuous improvement processes of Integrated Training. In addition, these records management procedures will ensure that all documentation providing evidence of compliance to the essential standards of registration is accurately maintained.

Record keeping procedures

Upon enrolment, student's details will be entered into Integrated Training's database. This process initiates the establishment of the student's individual file which is then used to record all future details pertaining to the student. Documents pertaining to students currently enrolled are stored in secure, individual student files which are managed by Integrated Training's staff. The file is retained by Integrated Training and management of the file will be in accordance with Integrated Training's training records policy.

Integrated Training will retain client records for a period of thirty (30) years. These records include:

- Records of assessment results
- Records of attainment of units of competency and qualifications
- Copies of certificates and statements of attainment
- Student enrolments
- Fees paid and refunds given

Integrated Training will also maintain records of staff profiles detailing qualifications and industry experience and other documentation necessary to develop, implement and maintain Integrated Training's quality system.

Completed assessments

Each and every assessment submitted by every student will be retained for a minimum period of six (6) months. Individual student records will be stored in a lockable steel filing cabinet in a locked secure office area.

At the expiration of six (6) months period, the student's assessments will be scanned and stored electronically for thirty (30) years. The electronic records are stored utilising AVETMISS compliant software and access is restricted by a password system.

Results of assessment records

Student assessment results will be recorded electronically within the Integrated Training database system and will be retained for thirty (30) years. This information may be used to provide annual competency completion reports and/or AVETMISS reports, as required and will provide sufficient information to re-issue the testamur, if required.

A copy of each testamur issued is scanned and retained in Adobe PDF format. If requested, the testamur may be re-printed at any time within the thirty (30) year period after issue. This method ensures the original format, design, signature, date and units of competency are re-printed accurately and with a minimum of effort and expense.

AVETMISS Reporting

AVETMISS stands for the Australian Vocational Education and Training Management Information Statistical Standard. It is a national data standard that ensures consistent and accurate capture and reporting of VET information about students. The National Centre for Vocational Education Research (NCVER) is the custodian of the standard.

Integrated Training submits AVETMISS reports to NCVER annually. These reports include all student and training data including:

- age, sex and other demographic information
- Indigenous and disability information
- geographic location
- type of provider (for example, government or private)
location of training delivery
- enrolments in units of competency, as part of a qualification, and modules as part of courses
- how it was studied (for example, classroom, workplace or online)
- how it was funded
- the results obtained for unit/module (outcome)

This reporting is made under the authority of the Data Provision Requirements that are established by agreement of Training Ministers across Australia under the National Vocational Education and Training Regulator Act 2011.

Access to Records

Integrated Training has implemented a record management system that ensures that all students have access to accurate information regarding their learning in a timely fashion. To ensure this, employees are informed of their responsibilities for record keeping and the process is monitored through the continuous improvement process and improved where necessary. This section outlines the data management procedures that support this records management system.

Access to Student Records

Access to individual student training records will be limited to those such as:

- Trainers and assessors to access and update the records of the students whom they are working with
- Management staff as required to ensure the smooth and efficient operation of the business
- Officers of ASQA or their representatives for activities required under the standards for registered training organisations

Integrated Training's trainers and assessors will maintain accurate and current records of each student's progress and achievement of competencies in the area of their study. These records will be entered on the Integrated Training's database system during training and assessment or immediately at the completion of training and assessment.

As students complete each competency, the trainer or assessor will check the achievements against the relevant qualification packaging rules and sign off successfully completed competencies. All details of full or partially completed competencies will be recorded and stored on the student's file.

Upon completion of all relevant competencies within a qualification, the student will be entitled to receiving the full qualification. The certificate and statement of results and/or statement of attainment will be produced and presented to the student. A scanned electronic copy of all signed qualifications issued will be converted to PDF format and secured in the student's file.

Student Access to Records

Students have the right to request information about or have access to their own individual records. Integrated Training trainers and assessors or administration staff will provide the requested information or access. Students also have the right to request a hard copy of their own individual file that can be supplied as a printout from records retained within the data management system.

You should feel free to ask your Integrated Training trainer and assessor or administration staff at any time for a printout of your progress.

Privacy

Integrated Training considers student privacy to be of utmost importance and will practice a high standard of care and concern in regard to maintaining student privacy in all aspects of business operations. Any persons external to the organisation acting on behalf of Integrated Training are made aware of the confidentiality procedures and privacy policies prior to commencing work with Integrated Training.

Integrated Training will comply with all legislative requirements including the Privacy Act 1988 (Commonwealth) and the [Australian Privacy Principles \(2014\)](#). www.privacy.gov.au. Integrated Training ensures no student information is disclosed without the student's consent, except as required by law or in adherence to the Standards for RTOs. Student consent must be obtained in writing from the student, unless the student is under the age of 18 years, in which case written consent from their parent or guardian must be obtained. Consent to disclosure of information forms and/or letters will be recorded.

Security

Integrated Training ensures further security of records by complying with the storage requirements detailed in ASQA's General directive: *Retention requirements for completed student assessment items*, 22 June 2012. This directive includes requirements for storage including: safeguards against unauthorised access, fire, flood, termites or any other pests, and to ensure that copies of records can be produced if the originals are destroyed or inaccessible. Integrated Training enhances its compliance with this directive by protecting electronic files with up-to-date virus protection, firewall and spy ware protection software.

The data management system is Cloud based and offers the security and integrity expected of a reputable Cloud storage system. In addition, electronic records are copied to a portable hard drive, every four (4) week period. The portable hard drive is stored off site in a fire proof secure location.

Integrated Training software and hardcopy systems will retain student's results for a period of no less than thirty (30) years. If requested, enrolment information, training and assessment information or results of assessment will be provided in electronic format wherever possible.

Paper based records will be scanned and saved in Adobe PDF format. Paper records will be securely shredded every twelve (12) months in accordance with Integrated Training CEO's directions.

Ceasing Operation

In the event that Integrated Training ceases to operate, its records will be transferred to ASQA in the appropriate format and detail as specified by the Department at the time of ceasing RTO operations. All other records including training records, taxation records, business and commercial records will be retained for a period of at least seven (7) years. Integrated Training will ensure that any confidential information acquired by the business, individuals, or committees or organisations acting on its behalf is securely stored.

COMPLAINTS AND APPEALS

Integrated Training strives to ensure that each student is satisfied with their learning experience and outcome. It is anticipated that issues of concern can be resolved by meaningful and respectful communication that is encouraged by Integrated Training. In the unlikely event that this is not the case, all students have access to rigorous, fair and timely complaint and appeal processes which are outlined in this section of the policy and procedures document

Integrated Training has a defined and transparent complaints and appeals process based on the principles of natural justice and fairness that will ensure student's complaints and appeals are addressed effectively and efficiently. Integrated Training's complaints and appeals policy ensures students and clients understand their rights and the responsibilities of the RTO.

Any complaints or appeals will be reviewed as part of the continuous improvement process and where corrective action has been highlighted, it will be implemented as a priority. This approach ensures that outcome of the complaints process provides a positive and constructive contribution to the operations of Integrated Training.

Complaints

A student may lodge a complaint regarding the RTO; Third Party; Subcontractor; another student or Trainer. There is also provision for any and all interested stakeholders to make a complaint if they feel aggrieved. For example, a Trainer may lodge a complaint against a student.

A complaints procedure is available to all persons wishing to make a complaint, appeal or any other manner of objection in relation to the conduct of Integrated Training. The complaints procedure will address both formal and informal complaints. All formal complaints must be submitted in writing to Integrated Training management and will be heard and addressed, including a response to the aggrieved person, within five (5) working days of receipt.

Integrated Training management will maintain a complaint register to document the course of action and resolution of all formal complaints. All complaints substantiated by the complaint procedure will be reviewed as part of the Integrated Training continuous improvement procedure.

It is the responsibility of Integrated Training management to ensure adherence to the complaint procedure and that resolution is sought in all reasonable circumstances. This includes informing and assisting students with the complaint procedure and supply of complaint forms.

Where the appellant remains dissatisfied with the outcome of the appeals handling procedure, the appellant is to be directed to the following external agencies:

- An independent agency or consultant within the VET sector
- The Office of Fair Trading in relation to consumer protection issues
- [National Training Complaints Hotline](#) on 133 873

Appeals

The Integrated Training appeals process is concerned with a student's right to request change to decisions or processes of an official nature, usually in relation to academic or procedural matters.

In the case of a student's appeal against specific assessment decisions, the student should first discuss the decision(s) with the relevant trainer or assessor and request re-evaluation. The trainer or assessor will hear the student's appeal, make fair judgement to the best of their ability as to whether change(s) are required and then discuss their final decision with the student.

If the student is still dissatisfied with the trainer or assessor's decision, they have the right to take the appeal to the management team. The formal notice of appeal is required to comply with the following principles upon submission to management:

- The notice of appeal should be in writing, addressed to Integrated Training for referral to the management team and submitted within five (5) days of notification of the outcome of the trainer or assessors re-evaluation process.
- The notice of appeal must be submitted within the specified timeframe otherwise the original result will stand. If a student's appeal needs to be deferred due to emergency circumstances, such as in the case of serious illness or injury, a medical certificate supporting the case must be forward to management. The notice of deferral must be submitted within three (3) working days of the conclusion date displayed on the medical certificate.

It is the responsibility of Integrated Training management to ensure adherence to the appeal procedure and that resolution is sought in all reasonable circumstances. This includes informing and assisting students with the appeal procedure and supply of appeal forms.

All appeals will be reviewed at the monthly management meeting and, if appropriate, result in a continuous improvement process.

Where the appellant remains dissatisfied with the outcome of the appeals handling procedure, the appellant is to be directed to the following external agencies:

- An independent agency or consultant within the VET sector
- The Office of Fair Trading in relation to consumer protection issues
- [National Training Complaints Hotline](#) on 133 873

Complaint/Appeal Procedure

All persons wishing to make a complaint, appeal or any other manner of objection in relation to the conduct of Integrated Training or any third party (such as other students, outsourced trainers, subcontractors, staff, trainers, assessors) have access to the following procedure:

Informal complaint/appeal:

- An initial complaint or appeal will involve the student communicating directly with Integrated Training verbally or by other appropriate means.
- All persons identified or subject to a complaint will be notified in writing of the content of the complaint and/or allegation and afforded all natural justice and procedural fairness response mechanisms
- Integrated Training management will make a decision, discuss their judgement with the student and record the outcome of the complaint or appeal
- Students dissatisfied with the outcome of Integrated Training's decision may initiate the formal complaint procedure

Formal complaint/appeal:

- It is normal procedure that all formal complaints proceed only after the initial informal complaint or appeal procedure has been finalised
- The formal complaint or appeal is to be submitted in writing, and the procedure and outcome recorded by Integrated Training management
- On receipt of a formal complaint, the CEO or a nominated senior management person independent of the complaint will notify the complainant in writing that they have received the submission.
- The CEO will convene the complaint committee to hear the complaint
- The complaint committee will consist of a panel of members with no previous involvement or vested interest in the outcome of the particular complaint or appeal. Members of the committee should include:
 - A representative of Integrated Training management
 - A Integrated Training staff member
 - A person independent of Integrated Training (i.e. Richard Turner of TBS Consulting)
- The complainant/appellant shall be given an opportunity to present the case to the committee and may be accompanied by one (1) other person as support or as representation
- Staff member(s) involved shall be given an opportunity to present their case to the committee and may be accompanied by one (1) other person as support or as representation
- The complaint committee will reach a decision on the complaint or appeal after consideration of each case presented
- The complaint committee will inform all parties involved of the outcome in writing within five (5) working days of making the decision

All complaints and appeals will be reviewed at Integrated Training monthly management meeting. Continuous improvement procedures may be actioned when the complaint/appeal procedure results in identification of factors appropriate for improvement to internal operations. When the initial causative factor of the complaint identifies a problem with current Integrated Training policies and/or procedures, the continuous improvement procedure will ensure changes are made to prevent reoccurrence of the problem.

Delayed processes

In the unusual circumstances where a delay in the complaint or appeal process occurs, where longer than sixty (60) calendar days are required to process and finalise the complaint or appeal, Integrated Training will inform the complainant or appellant in writing. In line with the importance that Integrated Training places on open and transparent processes and communication, the first written communication will be made at five (5) days. From that point, the complainants or appellant will be regularly updated on the progress of the matter. Including reasons why more time is required.

LEGISLATIVE REQUIREMENTS

Registered training organisations are subject to legislation pertaining to training and assessment, as well as business practice. Integrated Training will comply with relevant legislation and regulatory requirements and will inform all staff and clients of the requirements that affect their duties or participation in vocational education and training. Integrated Training recognises that compliance with legislative requirements underpins the effective implementation of its operations and ensures accountability and transparency of activities of both management and staff.

Current Legislation

Current legislation is available online at: <http://austlii.edu.au>

Examples of legislation relevant to the training business, its staff and students includes but is not limited to:

Commonwealth legislation:

- Copyright Act 1968
- Commonwealth Privacy Act 1988/Privacy Amendment Act 2012/Privacy Regulation 2013
- Commonwealth Sex Discrimination Act 1984
- Commonwealth Racial Discrimination Act 1975
- Commonwealth Age Discrimination Act 2004
- Commonwealth Disability Discrimination Act 1992
- National Vocational Education and Training Regulator Act 2011
 - Standards for VET Regulators 2015
 - Standards for registered Training Organisations 2015

Western Australia legislation:

- Children and Community Services Act 2004
- Disability Services Act 1993
- Equal Opportunity Act 1984
- Fair Trading Act 2010
- Vocational Education and Training Act 1996
- Work Health and Safety Act 2011

Training authorities/regulators:

- National VET Regulator (NVR)
- Department of Education and Training
- Department of Employment
- Australian Skills Quality Authority (ASQA)
- Council of Australian Governments Industry and Skills Council (COAGISC)

Integrated Training Legislation Implementation

Work, Health and Safety Policy

The Work Health and Safety Act 2011 outlines the requirements of an RTO in establishing and maintaining workplace health and safety standards. The requirements of an RTO as specified in the above mentioned Act are to:

- Secure the health, safety and welfare of employees and other persons at work
- Eliminate, at the source, risks to health, safety or welfare of employees and other persons at work
- Ensure that the health and safety of members of the public is not placed at risk by the conduct of undertakings by employers and self employed persons
- Provide for the involvement of employees, employers, and organisations representing those persons, in the formulation and implementation of health, safety and welfare standards.

It is an obligation under legislation that all Integrated Training employees and management contribute to and assist in maintaining workplace health and safety and risk management operations as part of their role within the RTO. Integrated Training management is responsible for providing the following standards as part of its commitment to employees and clients:

- A safe workplace, with a safe system of work
- Adequate workplace health and safety professional development for Integrated Training students, employees, management and stakeholders
- Properly maintained facilities and equipment
- A clean, tidy, suitably designed workplace with the safe storage of goods.

Integrated Training has initiated procedures, policies, guidelines and work instructions, practicing an ongoing commitment to workplace health and safety including each site used for training delivery. The following procedures and standards are observed by Integrated Training to achieve a safe working and learning environment:

- Maintain a safe, clean and efficient working environment
- Evacuation plan (fire, bomb, major incident)
- Emergency control
- Accident/Incident reporting
- Rehabilitation
- Risk identification reporting
- PPE/chemicals (storage)
- Manual handling techniques and training
- Store and dispose of waste according to WHS regulations
- Equipment checks and maintenance
- Equipment safe storage
- Fire hazards identified and fire prevention
- Student safety
- Unsafe situations identified and reported
- First aid and safety procedures displayed, for all Integrated Training staff and students to see

Harassment and Discrimination Policy

Under Australian law it is a requirement of every workplace to ensure it provides an environment free from all forms of harassment and discrimination, including victimisation and bullying. In doing so, all staff and students are treated fairly and have the opportunity to feel safe, valued and respected.

Discrimination is where a person treats or proposes to treat, a person with an attribute less favourably than another person without the attribute is or would be treated under the same circumstances. Examples include but are not limited to discrimination by age, disability, employment, nationality, religion, gender and sexual orientation.

Harassment is any unwelcome and uninvited comment or action that results in a person being intimidated, offended, humiliated or embarrassed.

Bullying is any unwelcome and offensive behaviour that intimidates, humiliates and/or undermines a person or group. Bullying involves a persistent pattern of behaviour over a period of time and may include verbal abuse, physical assault, unjustified criticism, sarcasm, insults, spreading false or malicious rumours, isolating or ignoring a person, putting people under unnecessary pressure and sabotaging someone's work or their ability to complete their work.

At Integrated Training it is made known that in the event that a person considers that he or she has been or is being harassed, this person should be encouraged to inform the other party that their behaviour is objectionable and should not be continued, provided they are comfortable with confronting the offender. In instances where the person is not comfortable discussing the matter with the offending party, a trainer or other Integrated Training staff member should be informed of the situation. In this case it becomes the responsibility of the relevant staff member to follow Integrated Training policy and procedures to rectify the situation.

The following principles and processes are implemented by Integrated Training to achieve a working and learning environment that is free from harassment and discrimination:

- It is the right of all staff and student's to work and study in an environment free of any form of harassment and discrimination
- All reports of harassment and discrimination will be treated seriously, in an unbiased, respectful and sensitive manner. Any form of harassment and discrimination is considered unacceptable behaviour and will not be tolerated by Integrated Training
- When Integrated Training management is informed of any event involving harassment or discrimination, it is their responsibility to take immediate and appropriate action to address it
- In dealing with all complaints, the rights of all individuals involved should be respected and confidentiality should be maintained
- It is the intention of Integrated Training management that a process of discussion, cooperation and conciliation will resolve all complaints. The aim is to achieve an acceptable outcome for the involved parties while minimising any potential damage to the organisation
- Both the person making the complaint and the person against whom the complaint has been made will receive information, support and assistance in resolving the issue from Integrated Training management
- Victimisation is unacceptable and will not be tolerated. No person making a complaint or assisting in the investigation of a complaint should be victimised

- Harassment or discrimination should not be confused with legitimate comment and advice (including constructive feedback) given appropriately by management or trainers. Managers and trainers should be conscious of how they present their feedback to ensure the message is not misinterpreted
- Staff and students should not make any frivolous or malicious complaints. All staff and students are expected to participate in the complaint resolution process in confidence that the procedures are designed to ensure fair resolution

Working with Persons Under 18 Years of Age

There is no single national framework setting out the requirements for obtaining Working With Children Checks or Police Checks. Each state and territory has their own procedures and it is necessary to fulfil the requirements in the jurisdiction(s) in which you are working. Relevant legislation and state and territory screening programs are explained in this [linked table](#) at <https://aifs.gov.au>

In Western Australia the Working With Children Check (WWC Check) is compulsory screening for individuals who are required to work with persons under 18 years of age.

Students under 18 years of age may enrol with Integrated Training. According to the law, a child is considered any individual less than 18 years of age.

Integrated Training management recommend that all staff obtain the appropriate pre-employment screening which is mandatory in those cases where staff are required to train children. Information regarding Police checks and Working With Children Checks is available on the Australian Institute of Family Studies at <https://aifs.gov.au>.

Integrated Training will ensure that all students are protected from all forms of harm, including bullying, harassment, discrimination and intimidation. All staff are required to report to Integrated Training management any behaviour that can reasonably be considered harmful or potentially harmful to students, or where it is reasonable to believe that a student has been harmed or requires protection from harm.

In cases where allegations or information indicate it is reasonable to believe a student has suffered from or may require protection from harm, Integrated Training will report to situation the relevant authorities.

Consumer Rights

Consumer protection

On 1 January 2011, the Australian Consumer Law commenced and the Trade Practices Act 1974 was repealed and replaced by the Competition and Consumer Act 2010. The Australian Consumer Law provides for:

- National consumer protection and fair trading laws
- Enhanced enforcement powers and redress mechanisms
- A national unfair contract terms law
- A new national product safety regime
- A new national consumer guarantees law

Contractual agreement

Students who enrol in a training program with Integrated Training should be aware that they are entering into a contractual agreement. With a view to ensuring all students are fully aware of their rights and obligations, Integrated Training will design agreements, enrolment forms, service agreements or similar using a logical format and simple English. This may include, but is not limited to:

- Wording that allows the prospective student to know what he/she is agreeing to
- Clearly explained disclaimers
- No misleading or deceptive behaviour
- No actions, omissions or dialogue (written or verbal) that may force or coerce the student
- Fair dealings for disadvantaged students

For more information on consumer rights, please refer to www.consumerlaw.gov.au

Privacy Principles

The Privacy Amendment (Enhancing Privacy Protection) Act 2012 (Privacy Amendment Act) made many significant changes to the Privacy Act 1988 (Privacy Act). These changes commenced on 12 March 2014. The Privacy Regulation 2013, made under the Privacy Act, also commenced on 12 March 2014.

Privacy Principles that are strictly applied to all aspects of Integrated Training's operations include:

Collection

Integrated Training will only collect necessary information pertaining to one or more specific operations. The student will be informed as to the purpose for which details are being collected.

Use and disclosure

Integrated Training will ensure student personal information is not used or disclosed for secondary purposes without obtaining explicit consent from the student, unless a prescribed exception applies.

Data quality

Integrated Training will take all reasonable measures to ensure that all students' personal information that is collected, used or disclosed is accurate, current and complete.

Data security

Integrated Training will take all reasonable measures to ensure all collected students' personal information is protected from misuse, loss or damage, and that all data and record storage is secure from unauthorised access, modification or disclosure.

Openness

Integrated Training will maintain documentation which detail how students' personal information is collected, managed and used. When a student makes an enquiry in relation to information collected, Integrated Training will explain what information is held, for what purpose it is held and what procedures outline the collection and use of information.

Access and correction

Integrated Training will allow students access to personal information held in all circumstances unless prescribed exceptions apply. If the student identifies errors within the information, Integrated Training will correct and update to file.

Unique identifiers

Integrated Training will not assign students unique identifiers except when it is necessary for efficiency of operations. Commonwealth Government identifiers, such as Medicare numbers or Tax File Numbers, will only be used for the purposes of which they were issued.

Anonymity

Integrated Training will provide students the opportunity to interact with the business without requiring the student to make their identity known in any circumstances it is practical and possible to do so.

Trans-border data flows

Integrated Training privacy protection principles apply to the transfer of data throughout Australia.

Sensitive information

Integrated Training will request specific consent from a student in circumstances where it is necessary to collect sensitive information. Sensitive information may include, but is not limited to; information relating to a student's health, criminal record, racial or ethnic background.

Copyright

Provisions under Part VB of The Copyright Act 1968 allow all educational institutions to copy and communicate third party material to distribute to students, within the limitations of the Statutory Education license. The Copyright Agency Ltd (CAL) administers the Statutory Education license on behalf of the Attorney General's Department.

Any RTO electing to hold this license is legally allowed to introduce a wide variety of material into its training environment, both in hardcopy and digital format, without having to obtain direct permission from the owner.

The Statutory Education license facilitates compliance and good governance across the industry, while at the same time ensuring the freedom and flexibility of sharing information without infringing copyright legislation.

Without this license, an educational institution is generally not allowed to reproduce any third party material from any source, other than where there is a direct license/subscription in place or permission has been granted by the creator of the work.

Australian Skills Quality Authority (ASQA) is the national regulator for Australia's vocational education and training sector. ASQA regulates courses and training providers according to the Standards for Registered Training Organisations 2015 to ensure nationally approved quality standards for training are met.

Vocational Education and Training Regulations

The VET Quality Framework is comprised of:

- [Standards for Registered Training Organisations 2015](#)
- [Australian Qualifications Framework](#)
- [Fit and Proper Person Requirements](#)
- [Financial Viability Risk Assessment Requirements](#)
- [Data provision requirements](#)

The Framework established by the [National Vocational Education and Training Regulator Act 2011](#)

The legislative framework established by the [National Act 2011](#) and related legislation:

- Gives ASQA the power to audit an RTO at any time
- Gives ASQA the power to apply sanctions (including applying conditions to, suspending or cancelling a registration)
- Allows providers to seek a review of ASQA decisions

[Standards for Registered Training Organisations 2015](#) form part of the VET Quality Framework, a system which ensures the integrity of nationally recognised qualifications. These Standards underpin the risk based regulatory system that aims to increase the confidence of students and employers in the integrity of VET qualifications.

Integrated Training Student Acknowledgement Declaration

I acknowledge that I, _____, have received, read and fully understood the contents of this student handbook, which outlines the conditions of my rights and responsibilities as a student of Integrated Training.

Signature

Date

Name of Witness

Signature of Witness

Date

